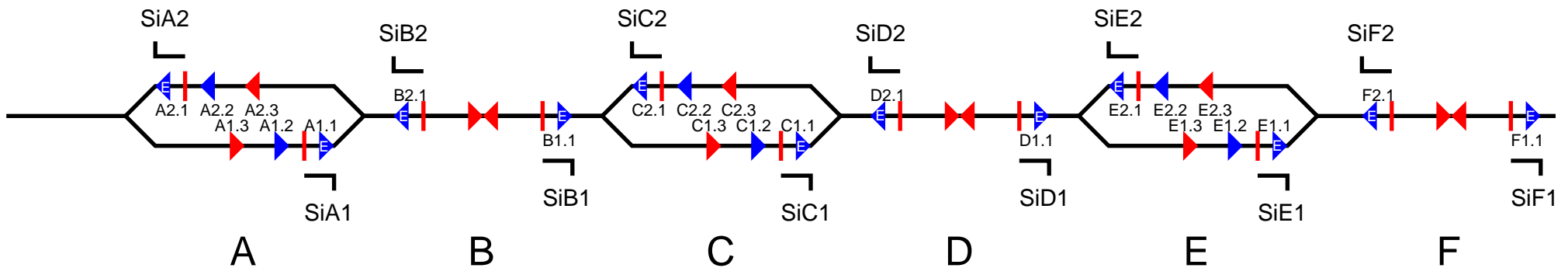


Prinzipschaltbild für eingleisige Blockstrecken



A1.1 > SiA1 ● [...]
 A1.2 > SiA2 ● [...]
 A1.3 > SiC2 ●
 A2.1 > SiA2 ● SiB2 ●
 A2.2 > SiA1 ● SiC2 ●
 A2.3 > [...]

B1.1 > SiB1 ●
 B2.1 > SiB2 ●

C1.1 > SiC1 ● SiB1 ●
 C1.2 > SiC2 ● SiA1 ●
 C1.3 > SiE2 ●
 C2.1 > SiC2 ● SiD2 ●
 C2.2 > SiC1 ● SiE2 ●
 C2.3 > SiA1 ●

D1.1 > SiD1 ●
 D2.1 > SiD2 ●

E1.1 > SiE1 ● SiD1 ●
 E1.2 > SiE2 ● SiC1 ●
 E1.3 > [...]
 E2.1 > SiE2 ● SiF2 ●
 E2.2 > SiE1 ● [...]
 E2.3 > SiC1 ●

F1.1 > SiF1 ●
 F2.1 > SiF2 ●

- ◀ Haltekontakt
- ▶ Schaltkontakt
- ▶ Schaltkontakt Zugende